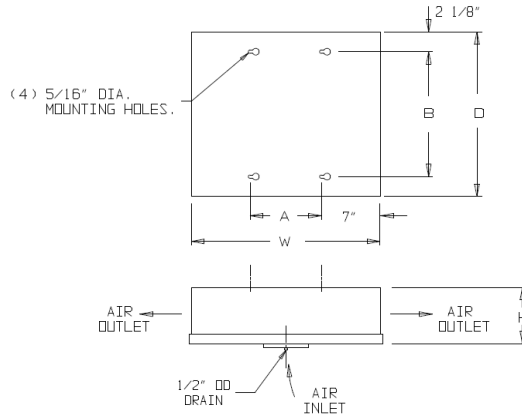




Peerless of America^{II}
Since 1912

EFFINGHAM, IL 62401
INSTALLATION INFORMATION, DIMENSIONS &
SPECIFICATIONS

**TWO WAY (TM)
UNIT COOLER
MEDIUM TEMPERATURE
AIR DEFROST**



DIMENSIONS

Model No.	Dimensions (Inches)			Mounting Hole Locations		Connections			Approx. Ship. Wt. Lbs.
	H	W	D	A	B	Inlet	Suction	Drain	
TM-100	4 5/8	20 3/8	16	6 1/2	11 3/4	3/8" OD	3/8" OD	1/2" OD	11
TM-135	4 5/8	20 3/8	16	6 1/2	11 3/4	3/8" OD	3/8" OD	1/2" OD	15
TM-180	4 5/8	20 3/8	16	6 1/2	11 3/4	3/8" OD	3/8" OD	1/2" OD	15
TM-250	5 5/8	20 3/8	16	6 1/2	11 3/4	3/8" OD	3/8" OD	1/2" OD	16
TM-350	5 5/8	20 3/8	16	6 1/2	11 3/4	3/8" OD	3/8" OD	1/2" OD	16

PEERLITE protective coated coils designated by a "-P" after model number.

SPECIFICATIONS

Models with a *A suffix after the model number employ ECM motors.

Model No.	BTU/HR		CFM	Fan Dia. (Quantity)	STD. Motor Amps		ECM Motor Amps	
	10° TD	15° TD			115 V	230 V	115 V	230 V
TM-100	1000	1500	125	5 1/4"	0.65	0.30	N/A	N/A
TM-135	1350	2025	250	5 1/4" (2)	1.30	0.60	N/A	N/A
TM-180	1800	2700	250	5 1/4" (2)	1.30	0.60	N/A	N/A
TM-250	2500	3750	300	8"	0.73	0.45	0.30	0.15
TM-350	3500	5250	300	8"	0.73	0.45	0.30	0.15

Standard 115/60/1 (230/60/1 optional)

GENERAL SAFETY INFORMATION

1. Only personnel qualified and familiar with this type of equipment should be responsible for the installation, service and maintenance of these units.
2. Disconnect all power sources prior to installing, servicing, or maintaining these units.
3. All field wiring must conform to equipment requirements and all applicable national, state and municipal codes.
4. Reduce potential for injury by avoiding direct contact with sharp edges and coil surfaces when handling these units.

We reserve the right to make changes in design and construction at any time without notice.

July-15
PP# 05104