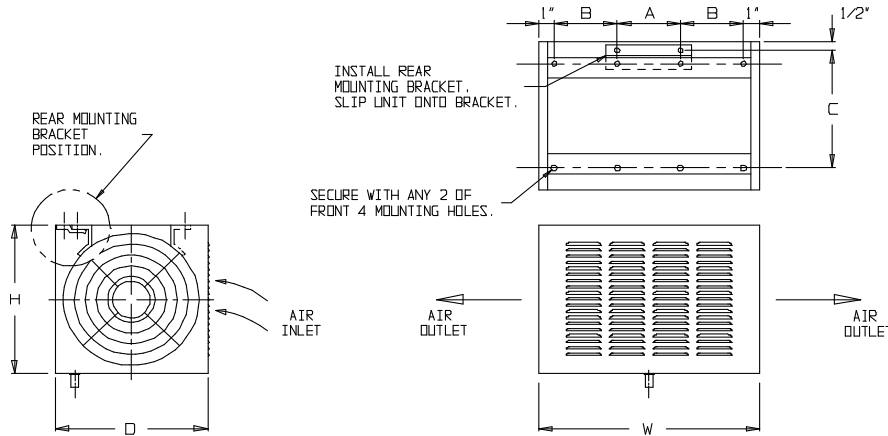




Peerless of America
Since 1912

EFFINGHAM, IL 62401
INSTALLATION INFORMATION, DIMENSIONS &
SPECIFICATIONS

**TWIN POWER PACK (TP)
UNIT COOLER
MEDIUM TEMPERATURE
AIR DEFROST**



DIMENSIONS

Model No.	Dimensions (Inches)			Mounting Hole Locations			Connections			Approx. Ship. Wt. Lbs.
	H	W	D	A	B	C	Inlet	Suction	Drain	
TP-82D	9 1/2	16	9 1/2	7 1/4	3 3/8	7 1/2	1/2" OD	3/8" OD	1/2" OD	18
TP-83D	9 1/2	18	9 1/2	7 1/4	4 3/8	7 1/2	1/2" OD	3/8" OD	1/2" OD	20
TP-84D	9 1/2	20	9 1/2	7 1/4	5 3/8	7 1/2	1/2" OD	3/8" OD	1/2" OD	24
TP-103D	11 1/2	18	11 1/2	7 1/4	6 3/8	9 1/4	1/2" OD	3/8" OD	1/2" OD	26

PEERLITE protective coated coils designated by a "-P" after model number.

SPECIFICATIONS

Model No.	BTU/HR		CFM	Fan Dia. (Qty)	Motor Amps	
	10° TD	15° TD			115 V	230 V
TP-82D	1500	2250	300	8" (2)	1.00	0.50
TP-83D	2000	3000	300	8" (2)	1.00	0.50
TP-84D	2500	3750	300	8" (2)	1.00	0.50
TP-103D	3000	4500	400	10" (2)	1.00	0.50

Standard 115/60/1 (230/60/1 optional)

GENERAL SAFETY INFORMATION

- Only personnel qualified and familiar with this type of equipment should be responsible for the installation, service and maintenance of these units.
- Disconnect all power sources prior to installing, servicing, or maintaining these units.
- All field wiring must conform to equipment requirements and all applicable national, state and municipal codes.
- Reduce potential for injury by avoiding direct contact with sharp edges and coil surfaces when handling these units.

We reserve the right to make changes in design and construction at any time without notice.

July-15
PP# 05107